

Criminal sanctions agency
Statistical yearbook
2020

Statistical yearbook 2020



Criminal Sanctions Agency

Central Administration

Lintulahdenkatu 5, FI-00530 Helsinki, Finland

Tel. +358 2956 88500

kirjaamo.rise@om.fi

The Statistical Yearbook of the Criminal Sanctions Agency is published annually in Finnish, Swedish, and English on the website

www.rikosseuraamus.fi/en

ISSN 2736-8432 (Online publication)

Contents

Terminology	4
List of tables	7
Prison services	7
Community sanctions	8
List of figures	9
Preface	10
1 Sanctions	11
1.1 Enforcement of sentences	11
1.2 Overview of the development of the penal system	12
2 Prison service	13
2.1 Development of prison population	13
2.2 Prison population structure	14
2.3 Order and safety	17
2.4 Prisoner activities	18
2.5 Recidivism among released sentenced prisoners	19
3 Community sanctions	20
3.1 Client volumes in community sanctions	20
3.2 Structure of community sanction client base	22
3.3 Social circumstances of community sanction clients	25
3.4 Social circumstances of community sanction clients	26
3.5 Participation in activities among community sanction clients	26
Tables: Prison services	27
Tables: Community sanctions	43

Terminology

Average number of community sanction clients

The calculation method of the average number of clients serving community sanctions was revised in 2012. Earlier, it was based on counting the number of enforcements, now it is based on counting the number of clients. As a result of the change, the average number dropped by about 200–300. If a person has several sentences of the same sanction form enforced simultaneously, the person is counted only once in the average number. However, if a person has different sanction forms enforced simultaneously, the person is counted in each sanction.

Combination sentence

A combination sentence consists of unconditional imprisonment and a one-year supervision term that follows the prison term. A combination sentence can be imposed on a person, who has committed a new serious offence and is deemed particularly dangerous to the life, health, or freedom of another. A person serving a combination sentence is not entitled to conditional release and probationary liberty under supervision. The main obligations of the supervised person include remaining at the place of residence at the set times, being sober at events related to the supervision term, and participating in rehabilitation or other activities. The commitment to the obligations is monitored by technical means, such as an ankle tag.

Community service

Community service may be sentenced instead of unconditional imprisonment of at most eight months. It mainly consists of unpaid non-profit work. The precondition is that the sentenced person is suitable for community service and consents to it. The Criminal Sanctions Agency prepares a pre-sentence report and the court makes the final decision on community service. The length of community service varies from 14 to 240 hours. Community service may also be imposed as an ancillary sanction to conditional imprisonment of over 12 months in which case it can last 20–90 hours.

Fine default prisoner

A fine default prisoner is a person serving a conversion sentence for an unpaid fine. A conversion sentence is passed on a person who has been sentenced to a fine and from whom the collection of the fine has failed.

House arrest

The court may impose a technically monitored house arrest on a person, who has been sentenced to unconditional imprisonment, as an alternative to remand imprisonment if the sentence is less than two years of imprisonment. Remand imprisonment means the time when a person suspected of an offence is remanded before the judgement becomes enforceable or final.

Juvenile punishment

Juvenile punishment can be sentenced for an offence committed under the age of 18 years if a fine is considered an insufficient sanction and there are no weighty reasons requiring unconditional imprisonment. A juvenile punishment may last from four to twelve months. Juvenile punishment consists of supervision appointments, guidance and support promoting coping in society and orientation to employment.

Length of time in prison

In this publication, the length of time served in prison is used in two different connections: it is used as cumulative data on prisoners released within one year and as cross-sectional data on prisoners in prisons on 1 May. The data differs from each other because the cumulative data emphasises short sentences and the cross-sectional data long sentences.

Monitoring sentence

A monitoring sentence may be imposed instead of unconditional imprisonment of at most six months if there is an obstacle to sentencing to community service. Prior unconditional prison sentences and monitoring sentences or the nature of the offence may prevent the imposition of a monitoring sentence. Another precondition is that the monitoring sentence has to maintain and promote the social abilities of the accused person. A person serving a monitoring sentence can move outside his or her home only at times determined in the schedule. The use of intoxicating substances is prohibited for the whole duration of the sentence. The sentenced person is monitored with the help of both technical devices and surprise visits to his or her home.

Probationary liberty under supervision

A prisoner can be placed in probationary liberty under supervision outside the prison a maximum of six months before the release on parole. During probationary liberty, the person must comply with the obligation to stay at home or other determined placement and take part in activities, which are scheduled every week. The person is required to abstain from intoxicating substances. The compliance with the conditions of probationary liberty is monitored in many ways.

Recidivism of sentenced prisoners

For the purposes of this statistical yearbook, a recidivist is defined as a person who after the release commits at least one new offence, which results in a final sentence of unconditional imprisonment or community service. The follow-up period starts at the date of release and ends with the date of commission of the first offence or the date of death. Foreign nationals are included in the data set if they have been issued with a Finnish personal identity code.

Remand prisoner

A remand prisoner is a person remanded due to a suspected offence. The court decides on remand. As a rule, a person remanded due to an offence must be taken, without a delay, to an institution approved by the Ministry of Justice to hold remand prisoners. The period of loss of liberty is deducted during the enforcement of the sentence.

Sentenced prisoner

A sentenced prisoner is a prisoner who serves a sentence of unconditional fixed-term or life imprisonment.

Supervision of parolees

Almost without an exception only a specific proportion of a prison sentence is served in prison. Parole, also known as conditional release, means the release of a prisoner sentenced to unconditional imprisonment to serve the remainder of the sentence in freedom. A prisoner released on parole is ordered to supervision if the probationary period is longer than one year, the offence was committed when under 21 years of age, or the prisoner so requests.

Supervision of persons sentenced to conditional imprisonment, adults

A person who has committed an offence when over 21 years of age may be subjected to supervision for 15 months in order to reinforce conditional imprisonment, where this is to be deemed justified in view of the social adaptation of the person and the prevention of further offences. If the obligations of the supervision are seriously breached, the remainder of the supervision term may be converted into short unconditional imprisonment.

Supervision of persons sentenced to conditional imprisonment, young persons

A person who has committed an offence when under 21 years of age may be subjected to supervision for 15 months in order to reinforce conditional imprisonment, where this is to be deemed justified in view of the social adaptation of the person and the prevention of further offences.

List of tables

Prison services

1. Prisoners in prisons according to gender, prisoner group, and prison type at the beginning and end of 2020	27
2. Average daily number of prisoners according to prisoner group in 2011–2020	27
3. Average number of under 21-year-old remand and sentenced prisoners in 2011–2020	27
4. Persons arriving in prison from freedom according to prisoner group, gender, and prison type in 2020	28
5. Persons arriving in prison from freedom according to prisoner group in 2011–2020	28
6. Released prisoners according to grounds for release, gender, and prison type in 2020	29
7. Released sentenced prisoners according to served sentence term, gender, and prison type in 2020	30
8. Length of conversion sentences for unpaid fines completed in 2020	30
9. Released prisoners according to prisoner group and gender in 2011–2020	30
10. Length of time served in prison (%) by released prisoners in 2011–2020	31
11. Prisoners released on parole in 2011–2020	31
12. Number of life sentence prisoners at the beginning of the year in 2011–2021 as well as commenced life imprisonments within the year, released life sentence prisoners, and average length of the served sentence in 2011–2020	32
13. Probationary liberty under supervision in 2011–2020	32
14. Principal offence of sentenced prisoners on 1 May in 2011–2020 (%)	33
15. Age groups of sentenced prisoners on 1 May in 2011–2020 (%)	34
16. Calculated length of time served in prison by sentenced prisoners on 1 May in 2011–2020 (%)	34
17. Number of previous prison sentences of sentenced prisoners on 1 May in 2011–2020 (%)	35
18. Average number of foreign prisoners according to prisoner group and their share of all prisoners in 2011–2020	35
19. Principal offence of foreign sentenced prisoners on 1 May in 2011–2020 (%)	35
20. Nationalities of foreign prisoners on 1 May 2020	36
21. Prison leaves in 2011–2020	37
22. Escapes and unauthorised leaves in 2011–2020	37
23. Prisoners' use of time in 2011–2020 (%)	37
24. Prisoners and prisons in 1981–2020	38
25. Recidivism of sentenced prisoners released in 2006–2015 (%) within a five-year follow-up period according to gender, age, and previous prison sentences.	40

List of tables

Community sanctions

26. Average daily number of community sanction clients in 2011–2020	40
27. Enforcement of community service in 2011–2020	40
28. Supervision of parolees in 2011–2020	42
29. Supervision of persons sentenced to conditional imprisonment (young persons) in 2011–2020	42
30. Supervision of persons sentenced to conditional imprisonment (adults) in 2011–2020	42
31. Enforcement of juvenile punishment in 2011–2020	43
32. Enforcement of monitoring sentence in 2012–2020	43
33. Principal offence of community sanction clients whose sanction ended in 2015–2020 according to sanction (%)	44
34. Age distribution of community sanction clients according to sanction (%) on 1 May in 2011–2020	45
35. Community sanction clients according to gender (%) on 1 May in 2011–2020	47
36. Socio-economic background of offenders carrying out community service on 1 May in 2011–2020 (%)	48
37. Socio-economic background of supervised parolees on 1 May in 2011–2020 (%)	49
38. Socio-economic background of supervised persons sentenced to conditional imprisonment on 1 May in 2011–2020 (%)	49
39. Socio-economic background of clients serving juvenile punishment on 1 May in 2011–2020 (%)	50
40. Socio-economic background of offenders serving monitoring sentence on 1 May in 2012–2020 (%)	50
41. Participation in programmes among community sanction clients whose sanction ended in 2016–2020	51
42. Use of punitive measures in community sanctions in 2011–2020	53

List of figures

1. Prisoners arriving from freedom, released prisoners, and average number of prisoners per year in 2011–2020	14
2. Principal offence of sentenced prisoners on 1 May in 2011, 2014, 2017 and 2020 (%)	15
3. Calculated length of time served in prison by sentenced prisoners on 1 May in 2011 and 2020	16
4. Average number of foreign sentenced and remand prisoners and their share of the average number of all prisoners in 2011–2020	17
5. Prison leaves in 2011–2020	17
6. Breakdown of prisoners' use of time on weekdays in 2020	19
7. Average daily number of community sanction clients in 2011–2020	21
8. Averages of prisoners and community sanction clients in 2011–2020	22
9. Principal offence of community sanction clients whose sanction ended in 2011, 2014, 2017 and 2020 according to sanction (%)	23
10. Age distribution of community sanction clients (%) on 1 May in 2011–2020	24

Preface

The aim of this statistical publication is to provide a wide range of information about the Criminal Sanctions Agency's client and prisoner numbers, enforcement of sentences, client structure, and operation. Besides portraying the current situation of the criminal sanctions field, the publication also offers insight into the development of the field over the past decade.

The statistical data are based on the information systems used by the Criminal Sanctions Agency. Owing to certain system-related restrictions, the time series on community sanctions are imperfect in some respects.

While primarily addressed to our own organisation in the criminal sanctions field, the publication is also envisioned to provide other individuals and organisations interested in the activities of the Criminal Sanctions Agency with answers to their frequent questions about prisoners and community sanction clients.

1 Sanctions

1.1 Enforcement of sentences

The sentences enforced by the Criminal Sanctions Agency are divided into prison sentences and community sanctions served in freedom. Community sanctions include the community service, monitoring sentence, supervision of persons sentenced to conditional imprisonment, juvenile punishment, and supervision of parolees. The enforcement of community sanctions is carried out by the community sanctions offices. Prisons are responsible for the enforcement of unconditional prison sentences and fine-conversion sentences imposed by the courts. In addition, prisons also implement remand imprisonment together with the police.

Finland is divided into three criminal sanctions regions, those for Southern, Eastern and Northern, as well as Western Finland. The basic units of the Criminal Sanctions Agency are community sanctions offices, open prisons and closed prisons. At the end of 2020, there were a total of 14 community sanctions offices and 26 prisons in Finland. The prisoner places are divided so that 68 per cent are in closed prisons and 32 per cent in open prisons or open prison wards.

1.2 Overview of the development of the penal system

The enactment of the Imprisonment Act in 2006 marked a shift towards systematic and consistent enforcement. Statutes related to parole (also known as conditional release) were also revised in connection with the Imprisonment Act and probationary liberty under supervision was introduced. A prisoner can be placed in probationary liberty under supervision a maximum of six months before regular release on parole. In addition, release units were established in 2011 as part of measures concerning a controlled and gradual release of prisoners. The conversion of unpaid fines into imprisonment was scaled back on several occasions in the mid-2000s. The possibility to convert fines imposed in the penal order proceedings into imprisonment was abolished in 2008.

The Acts concerning the investigation of the circumstances of young offenders and the supervision of conditional imprisonment entered into force in 2011. Supervision became more binding as the number of supervision meetings was increased. The Act on Monitoring Sentence also entered into force in 2011.

The Act on Monitoring Sentence made it possible to serve an unconditional prison sentence of no more than six months long under electronic monitoring at one's own home or another location deemed suitable. A monitoring sentence can also include support measures to promote social adaptation.

The Community Sanctions Enforcement Act, which entered into force in 2015, replaced the separate acts on each community sanction. The new Act clarified the interrelation between the different community sanctions and unified the making of assessments and statements linked to the imposition, preparation, and enforcement of community sanctions. A possibility to use both open and institutional substance abuse treatment services was added to the enforcement of community sanctions. Community service sentenced for an offence committed under the age of 21 years can include activities and programmes that are specifically targeted at young people, aim to enhance their social functioning, and provide them with support and guidance. The minimum length of community service was changed to 14 hours and the maximum length to 240 hours so that they would better correspond to the number of days imposed as imprisonment.

At the beginning of 2018, a new combination sentence was introduced. It consists of unconditional imprisonment and a one-year supervision term. A combination sentence can be imposed on a person, who has committed a new serious offence and is deemed particularly dangerous to the life, health, or freedom of another. Thus, the combination sentence applies to a small group of prisoners. The estimate is that only a few prisoners will proceed with the supervision term annually from the late 2020s onwards.

New technically monitored alternatives to remand imprisonment, i.e. intensified travel ban and house arrest, were taken into use at the beginning of 2019. The intensified travel ban is enforced by the police and the house arrest is enforced by the Criminal Sanctions Agency. So far, no cases of house arrests have been enforced. The maximum time of keeping a remand prisoner in a custody facility maintained by the police before the placement in prison was also shortened. Since the beginning of 2019, the police can keep a remand prisoner in its custody facilities only for a maximum of seven days unless there is a particularly weighty reason for it.

The whole system of sanctions ancillary to conditional imprisonment was tightened at the beginning of 2020. As a result of the reform, an adult, in other words, a person who has committed an offence when aged 21 or over can also be placed under supervision in order to reinforce conditional imprisonment.

2 Prison service

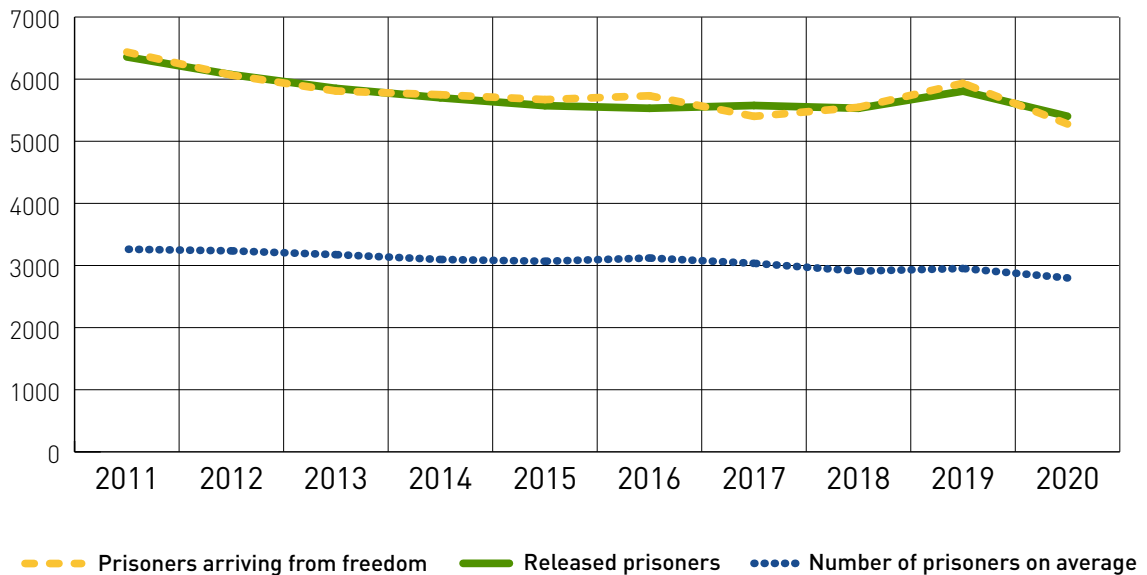
2.1 Development of prison population

The average daily number of prisoners has dropped since the mid-2000s except in 2016 and 2019 when the number increased slightly. In 2020, the drop in the number of prisoners was mainly caused by the restrictions on the commencement of the conversion sentences for unpaid fines and the unconditional prison sentences of six months at most due to the coronavirus epidemic. In 2020, the average daily number of prisoners was 2 800, which was about 150 less than the year before. The figure includes 2 104 sentenced prisoners (2 247 in the previous year), 63 fine default prisoners (66) and 632 remand prisoners (639).

In 2020, prisoners arriving in prison from freedom added up to 5 278, which was about 650 less than in the previous year. The figure consists of 1 797 sentenced prisoners, 1 221 fine default prisoners and 2 260 remand prisoners. The share of the sentenced prisoners of all arrived prisoners dropped to a third. The coronavirus restrictions affected the number of prisoners, but the share has decreased throughout the 2010s.

The total number of prisoners released from prison in 2020 was 5 402 of whom 2 757 were sentenced prisoners, 1 153 fine default prisoners, and 1 492 remand prisoners. Nearly 40 per cent (1 055) of the sentenced prisoners had served at most three months and 13 per cent (352) over two years of their sentence in prison. The average length of prison terms was 12.2 months. Approximately 47 per cent of the sentenced prisoners and 54 per cent of those, who had served in prison more than two years, were released from open prisons.

Figure 1. Prisoners arriving from freedom, released prisoners, and average number of prisoners per year in 2011–2020



The average daily number of prisoners placed in probationary liberty under supervision doubled in the 2010s. In 2020, an average of 227 prisoners were in probationary liberty under supervision daily. There were 828 new placements in probationary liberty, which was slightly less than in the year before (854). The average length of probationary liberty was 97 days. Approximately 18 per cent of the placements in probationary liberty were cancelled.

2.2 Prison population structure

The prisoner structure survey is conducted annually on 1 May. Due to the coronavirus epidemic in the spring 2020, the commencement of prison sentences of six months at most was restricted, which also caused changes in the distribution of the principal offences and the predicted length of time served in prison.

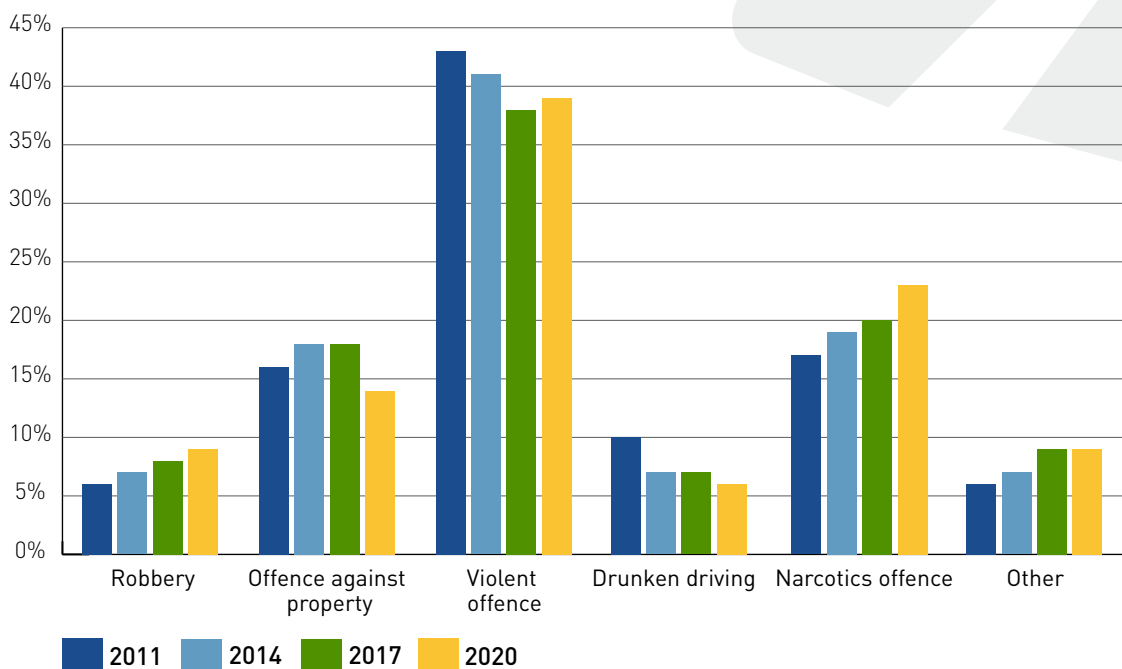
The biggest prisoner group is those sentenced for violent offences although their share has dropped since the early 2010s. In 2020, nearly 40 per cent of the prisoners had been sentenced for violent offences (23 per cent for homicide and 16 per cent for assault).

On average a fourth of all prisoners were sentenced for offences against property. The share of prisoners sentenced for theft (7%) has decreased and the share of those sentenced for robbery (9%) or other offences against property (7%) has increased.

The number of offenders sentenced for narcotics offences has increased. In 2020, their share of all sentenced prisoners was nearly a fourth (23%), whereas ten years ago their share was 17 per cent. Likewise, the share of offenders sentenced for sexual offences has risen. In 2020, about 7 per cent of the prisoners were sentenced for sex offences.

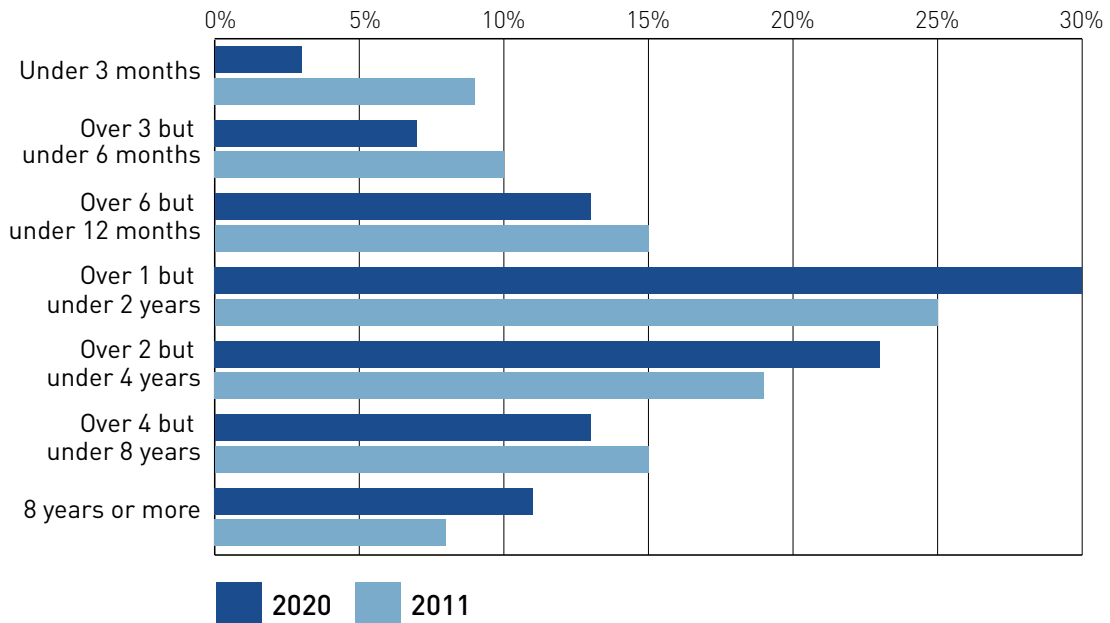
In the past decade, the share of offenders sentenced for drunken driving declined from 10 per cent to 6 per cent.

Figure 2. Principal offence of sentenced prisoners on 1 May in 2011, 2014, 2017 and 2020 (%)



In the 2010s, the share of long-term prisoners increased while the share of those serving a prison term of less than one year decreased. Prisoners serving a term of less than three months accounted for 3 per cent of the total prison population in 2020. Nearly a third of the prisoners (30%) were in prison for one to two years and nearly a fourth (23%) for two to four years. Roughly 11 per cent of all prisoners were looking to serve at least eight years in prison.

Figure 3. Calculated length of time served in prison by sentenced prisoners on 1 May in 2011 and 2020



The average age of prisoners increased until the mid-2010s but has dropped in recent years. On average, sentenced prisoners are older than remand prisoners. In 2020, the average age of sentenced prisoners was 37.0 years and the average age of remand prisoners was 34.9 years. Approximately 11 per cent of all sentenced prisoners were under 25 years old and 15 per cent were aged 50 or over. About 30 per cent of the remand prisoners were under 25 years old.

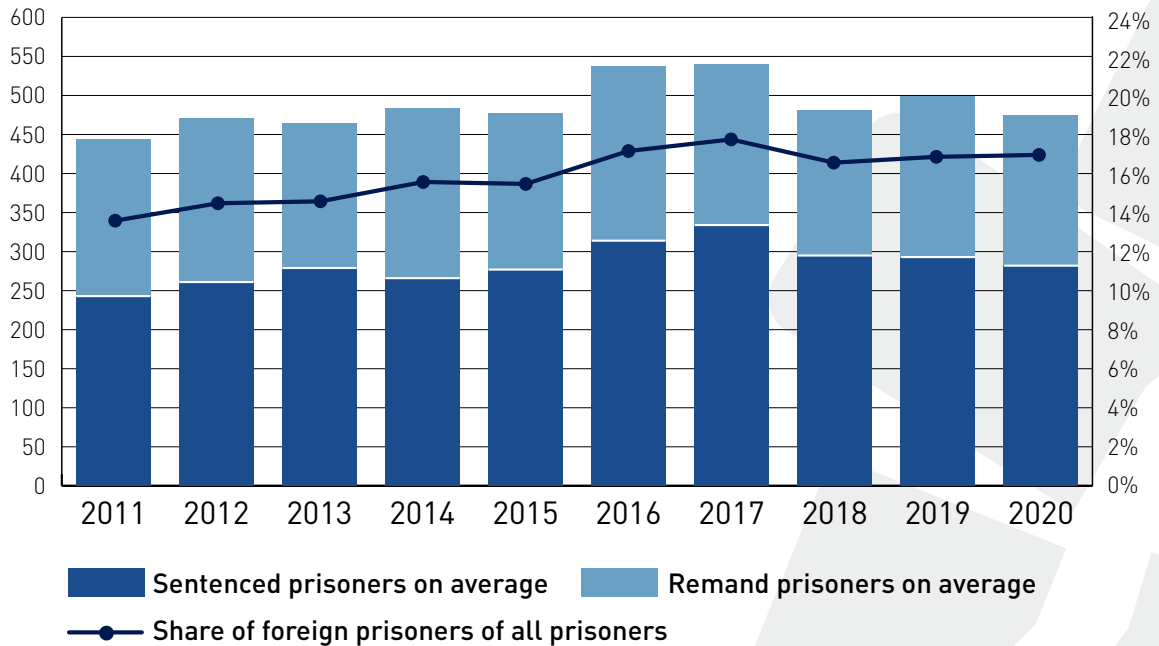
The share of first-time offenders rose from 33 to 42 per cent in the past ten years. Over a fourth of the sentenced prisoners (28%) were serving their third to seventh sentence in 2020. Approximately 16 per cent of the prisoners were in prison at least for the eighth time.

In 2020, there were on average 233 female prisoners making up about 8 per cent of all prisoners. The average age of female prisoners was 36.5 years. Four in ten female prisoners were sentenced for violent offences.

The share of foreign prisoners rose from 14 to 17 per cent in the past ten years. The number of foreign prisoners was the highest (540) in 2017. In 2020, the average daily number of foreign prisoners (475) was about the same as in the early 2010s. Four in ten foreign prisoners (41%) were remand prisoners.

According to the prisoner structure survey of 2020, 16 per cent of the foreign prisoners were Estonian, 10 per cent were Iraqis, and 7 per cent were Romanian. All in all, the foreign prisoners represented 69 different nationalities. Nearly half of the foreign sentenced prisoners (49%) were convicted of narcotics offences.

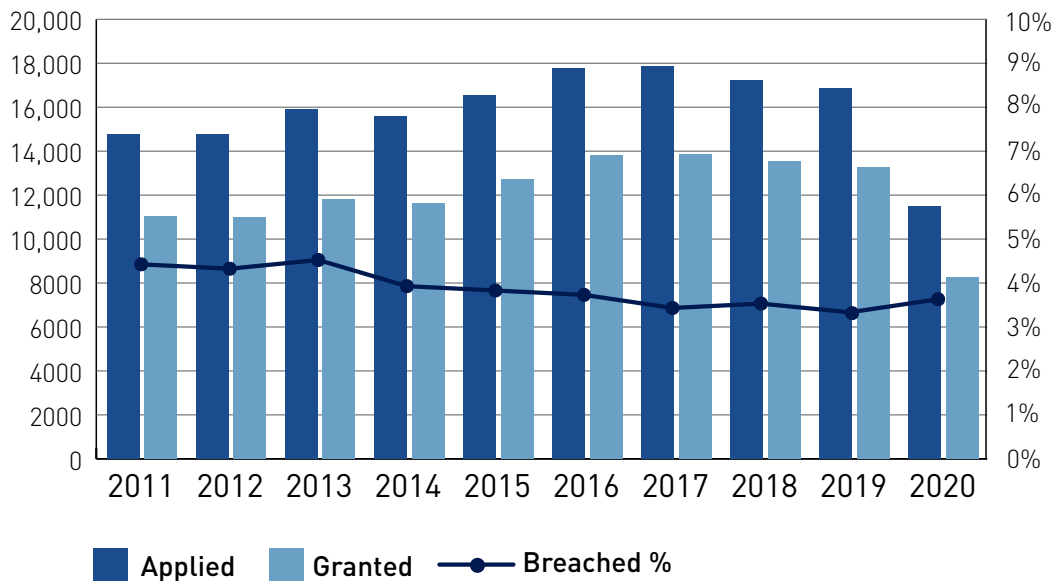
Figure 4. Average number of foreign sentenced and remand prisoners and their share of the average number of all prisoners in 2011–2020



2.3 Order and safety

Prisons had to restrict the prisoners' prison leaves in order to prevent the spread of coronavirus. In 2020, a total of 11 499 prison leave applications were submitted, which was over 5 300 less than in the previous year. Moreover, the share of granted prison leaves was lower (72%) than the year before (79%). The share of prisoners, who had breached the terms of their prison leave, dropped by about a fifth over the past ten years. In 2020, prison leave terms were breached on 278 occasions, equal to 3.6 per cent of all prison leaves used.

Figure 5. Prison leaves in 2011–2020



Over the past ten years, the number of escapes has varied between 6 and 17. In 2020, there were seven escapes. Most of the escapes happen outside the prison walls, for example from job sites outside the gated areas or from prison officers or other authorities escorting prisoners. In 2020, two prisoners escaped from inside prison walls.

Unauthorised leaves from open prisons are not included in the statistics as escapes. The number of unauthorised leaves was at the highest (82) in 2011. In 2020, there were 73 instances of prisoners leaving open prisons without authorisation.

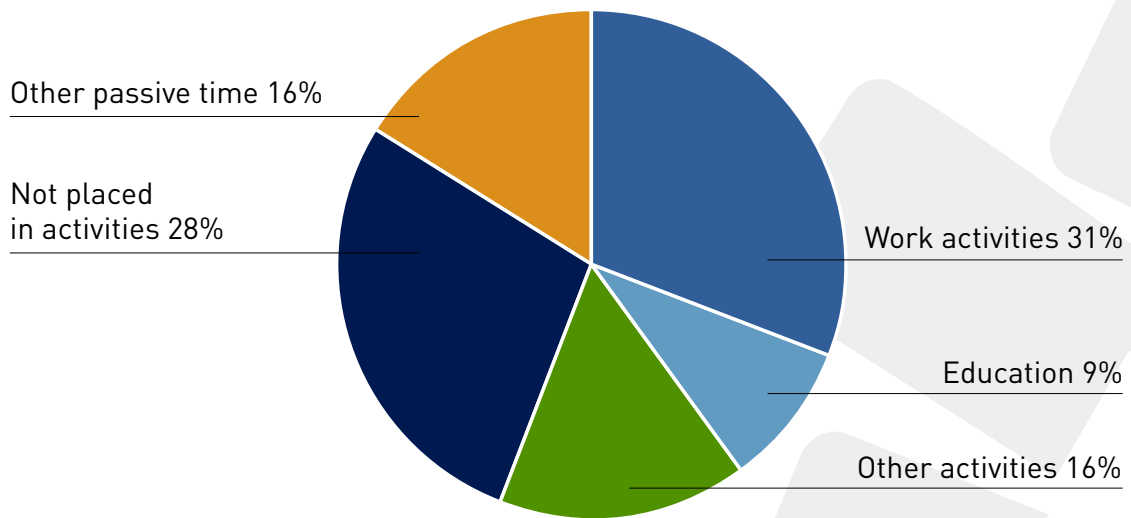
2.4 Prisoner activities

Prisoner activities consist of work, education, and other activities organised or approved by the prison. Different work activities cover about a third of the prisoners' use of time.

Education in the prisons is organised in cooperation with outside education institutions. Both general education (i.e. basic education and general upper secondary education) and vocational upper secondary education are arranged for prisoners. Higher education studies are available as distance learning on a study permit. In 2020, education formed 9 per cent of the prisoners' overall use of time. The share of prisoners taking part in other activities, such as substance abuse rehabilitation programmes, programmes aimed to reduce recidivism, and other social rehabilitation programmes, was 16 per cent of the use of time. The share of prisoner activities of the overall use of time has risen from 49 to 56 per cent in the past ten years.

The share of passive time of the prisoners' activity hours has decreased from 38 to 28 per cent. The factors preventing participation in activities are connected with insufficient staff resources, lack of facilities for activities in certain prisons, the prisoners' multiple problems, and the prison security. Participation in activities is the most common in open prisons and the least common among remand prisoners. About 16 per cent of regular working and activity hours is so-called passive time, i.e. sick leaves, transfers, court appearances, or prison leaves.

Figure 6. Breakdown of prisoners' use of time on weekdays in 2020



2.5 Recidivism among released sentenced prisoners

Recidivism among released sentenced prisoners decreased from 64 to 58 per cent during the period included in the statistics (prisoners released between 2006 and 2015). The biggest changes were in the recidivism of released first-time prisoners and female prisoners. In recent years, recidivism steadied at about 60 per cent.

During a five-year follow-up period, approximately three out of five sentenced prisoners (58%) released in 2015 committed at least one offence resulting in a new sentence of unconditional imprisonment or community service. Recidivism among prisoners under the age of 21 years dropped by 12 percentage points from the high level of the previous statistical year (91%) close to the average baseline of the age group (75–80%). Recidivism increased slightly in the older age groups in comparison with the previous statistical year. With regard to the number of previous prison terms, the most significant change was that the recidivism of prisoners who had been released from prison over five times (78%) increased by 3 percentage points since the previous statistical year (75%).

The key indicators of recidivism are criminal history and age: multiple offenders are at high risk to reoffend and young offenders are more likely to return to prison than older ones.

3 Community sanctions

3.1 Client volumes in community sanctions

The average daily number of clients serving community sanctions started to rise in 2019 after a downward trend that lasted over ten years*. In 2020, the average daily number of community sanction clients was 3 083, which was about 2 per cent more than the year before. The client volumes decreased in sanctions meant for young offenders but increased in other sanctions.

The average number of community service clients was 1 220, which increased by 6 per cent compared with the previous year. The number of new enforced community service sentences dropped in comparison with the previous years. In addition, due to the restrictions caused by the coronavirus pandemic, completing a community service sentence lasted longer than normally and, therefore, the number of ended community service sentences was clearly lower than in the previous years. The number of requested suitability assessments (4 190) increased by 8 per cent, which indicates a growing number of new community service sentences in the coming year. The suitability assessment includes a statement on the accused person's suitability for community service. The share of the favourable assessments of all drawn up assessments was 84 per cent, which was the same as in the previous year.

The first monitoring sentences were enforced at the beginning of 2012. In 2014 to 2017, the daily average number of clients serving a monitoring sentence stayed quite steadily at nearly 50, but in 2018 and 2019, the number dropped considerably. In 2020, the daily average number of clients serving a monitoring sentence was 39, which was 50 per cent more than the year before. However, the number of the requested suitability assessments for monitoring sentence dropped by 16 per cent. The use of monitoring sentence was recommended in 58 per cent of the suitability assessments.

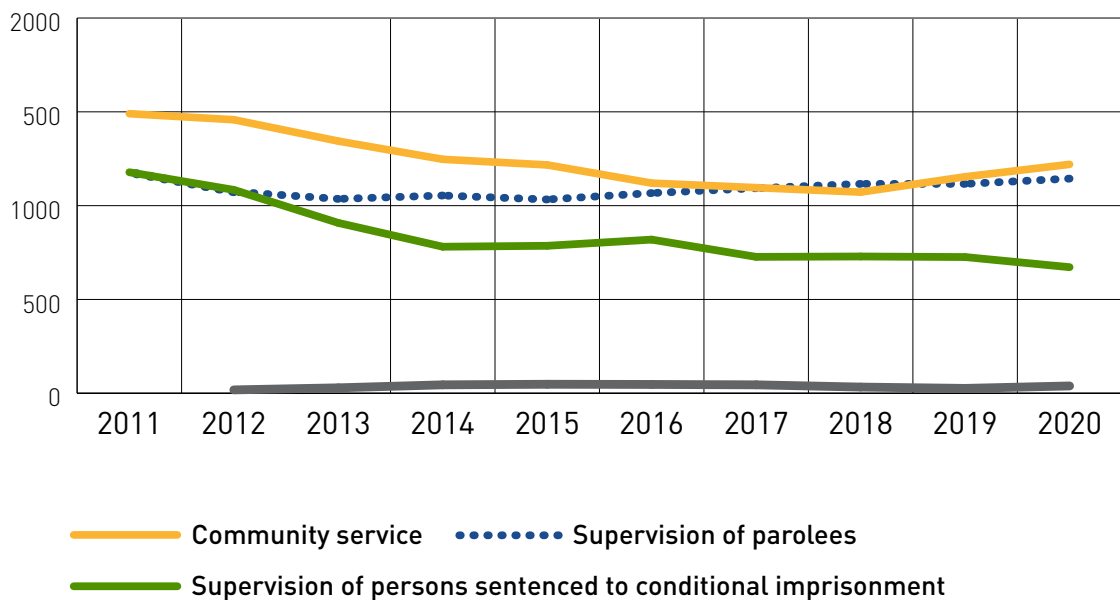
*The calculation method of the average number of clients serving community sanctions was revised in 2012. Earlier, it was based on counting the number of enforcements, now it is based on counting the number of clients. As a result of the change, the average number dropped by about 200–300. If a person has several sentences of the same sanction form enforced simultaneously, the person is counted only once in the average number. However, if a person has different sanction forms enforced simultaneously, the person is counted in each group.

The supervision of offenders sentenced to conditional imprisonment for an offence they committed at the age of 21 or over was introduced in 2020 but it had no significant effect on the client volumes of the Criminal Sanctions Agency. There were seven enforced supervisions in total and the daily average number of supervised clients was two.

The number of young offenders sentenced to conditional imprisonment and ordered to supervision started to decline after a few steady years. In 2020, the daily average of supervised young offenders sentenced to conditional imprisonment was 672, which was about 7 per cent less than the year before. The already low number of juvenile punishments stayed the same. In 2020, the average daily number of clients serving juvenile punishment was six in the whole country.

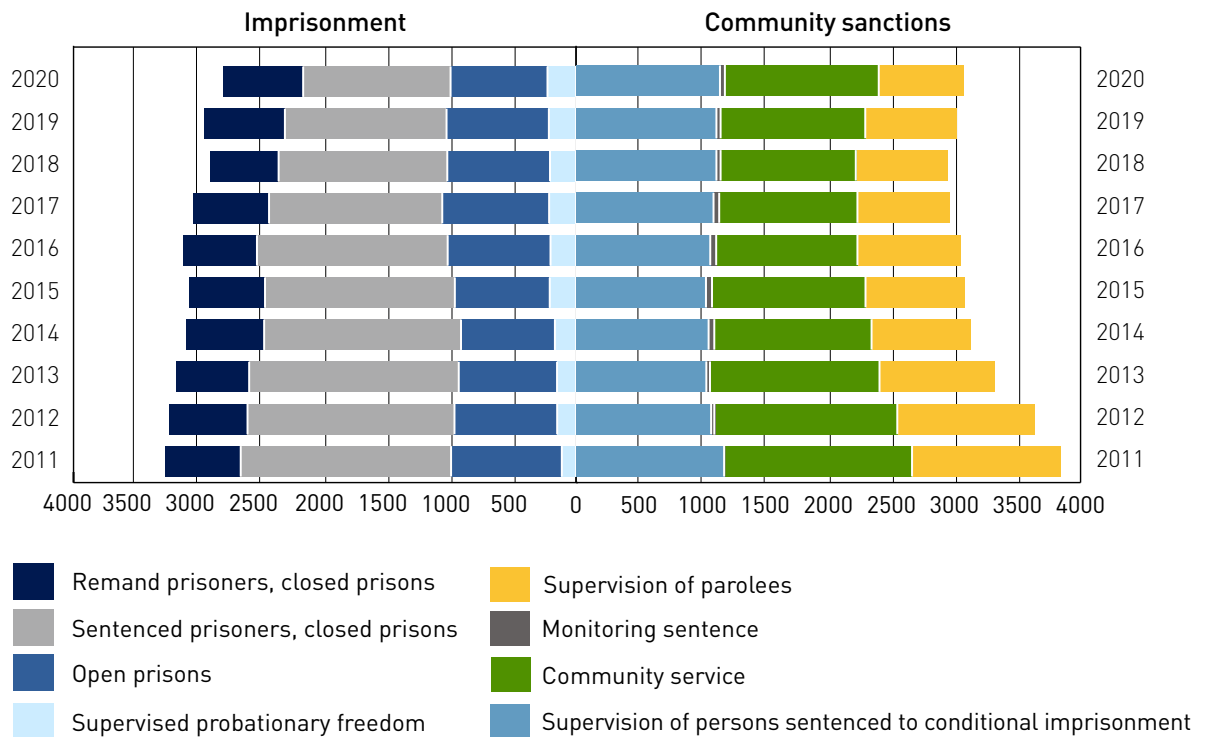
The average number of parolees under supervision started to drop steeply after 2005 but, since 2015, it has shown a slow upward trend. In 2020, an average of 1 144 parolees were subject to supervision daily, which was nearly 3 per cent more than in the previous year.

Figure 7. Average daily number of community sanction clients in 2011–2020



The number of community sanction clients dropped more than the number of prisoners until 2013. Since 2014, the shares of prisoners and community sanction clients have remained fairly steady. About half of all criminal sanction clients serve a prison sentence and half a community sanction.

Figure 8. Averages of prisoners and community sanction clients in 2011–2020



3.2 Structure of community sanction client base

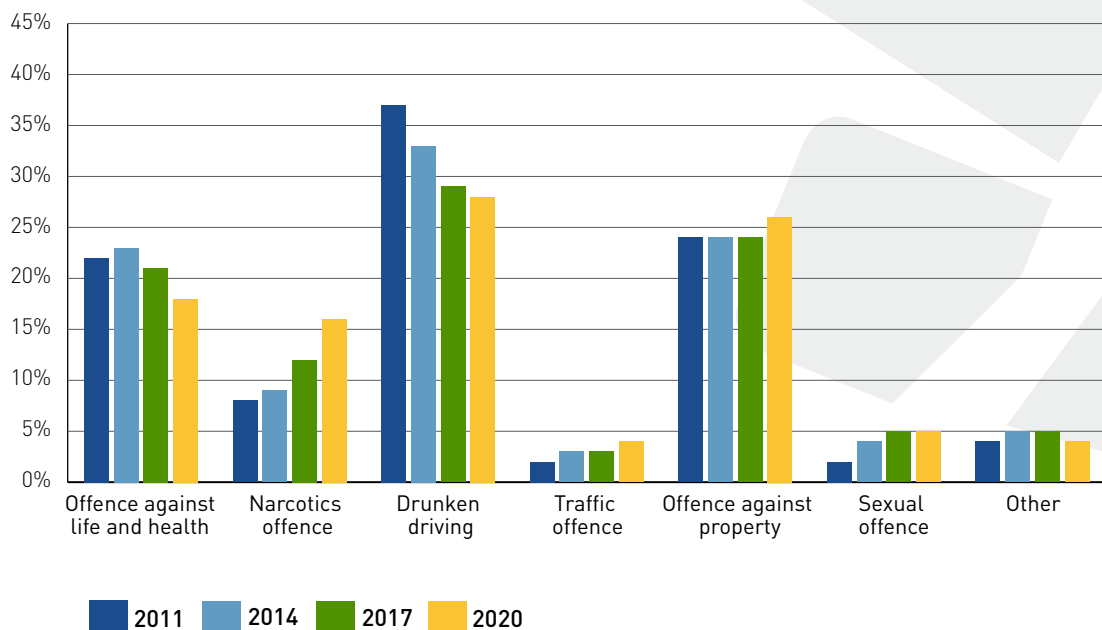
The most common principal offence among community service clients was drunken driving. In 2020, the share of those sentenced for drunken driving was 43 per cent of completed community service sentences. The next most common principal offences were offences against property (22%), violent offences (12%), and narcotics offences (12%).

Drunken driving was the most common principal offence also among those serving a monitoring sentence. In 2020, 57 per cent of monitoring sentences were sentenced for drunken driving. Offences against life and health accounted for 11 per cent of the sentenced offenders and offences against property 15 per cent. The share of sentences for other offences (9%), including, among others, refusing military service or civil military service, was 4 percentage points higher than in the year before. Until 2017, the share of other offences had typically been about 20 per cent.

The most common principal offence of supervised young offenders sentenced to conditional imprisonment was offence against property. In 2020, the share of those sentenced for offences against property was 34 per cent. The share of narcotics offences (20%) increased and was at the same level as violent offences (19%).

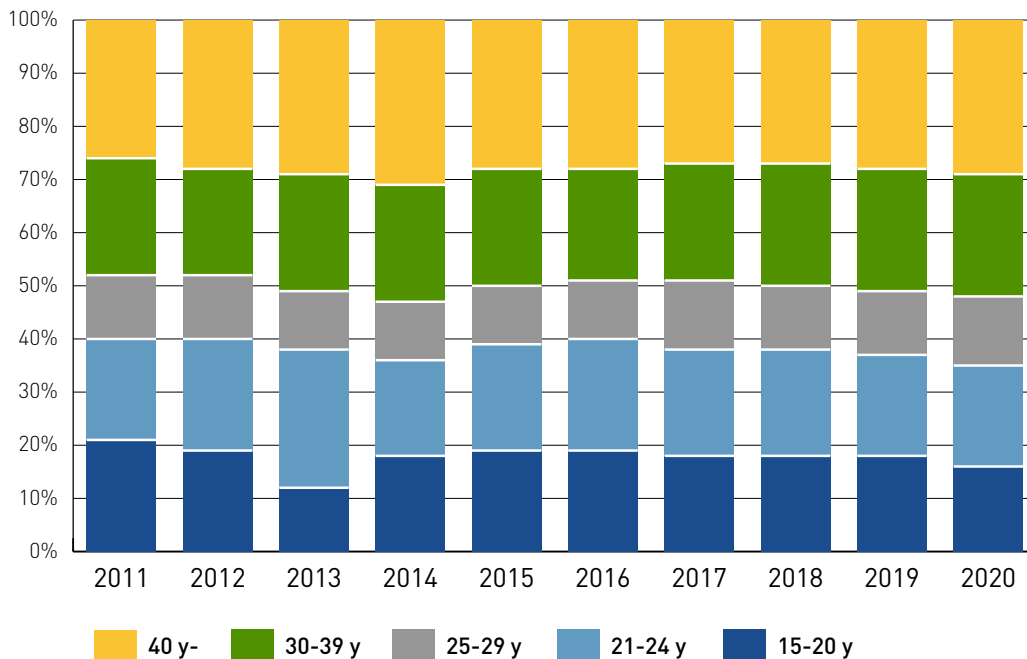
In the case of supervised parolees, violent offences and offences against property accounted for approximately two-thirds of their principal offences. The share of offences against life and health was 33 per cent and the share of offences against property was 28 per cent of the supervisions that ended in 2020. Narcotics offences stood in third place with 22 per cent.

Figure 9. Principal offence of community sanction clients whose sanction ended in 2011, 2014, 2017 and 2020 according to sanction (%)



In the past few years, about a fifth of community sanction clients were under the age of 21. In 2020, 16% were under 21-year-old, which was 2 percentage points less than in the previous year. Most of them (84%) were sentenced to conditional imprisonment under supervision. The largest age group of community sanction clients was 30–39-year-olds, who accounted for 23 per cent (732) according to the survey of 1 May. Their share was 30 per cent of the supervised parolees and community service clients and 19 per cent of the monitoring sentence clients.

Figure 10. Age distribution of community sanction clients (%) on 1 May 2011–202



Since 2011, women have accounted for a fairly steady 11 per cent of all community sanctions clients and it continued in 2020. The share of supervised female parolees is typically lower than the share of women serving other community sanctions.

Foreign nationals made up only a minor share of all community sanction clients. Based on the client structure survey of 1 May, they added up to about 180 altogether, which meant that 6 per cent of the clients were other than Finnish nationals. The biggest groups of foreign nationals were Estonians and Iraqis, who together formed 44 per cent of all the foreign nationals.

3.3 Social circumstances of community sanction clients

On average, more than half of the community sanction clients were unemployed. The share of unemployed parolees under supervision dropped by 9 percentage points during the past decade and was 51 per cent in 2020. The employed accounted for nearly a third (29%) of community service clients, a fourth (26%) of supervised parolees, almost a third (31%) of those serving a monitoring sentence, and 13 per cent of supervised persons sentenced to conditional imprisonment. Among the supervised young offenders sentenced to conditional imprisonment, the second largest group after the unemployed (58%) was the students, who accounted for 24 per cent in the client structure survey of 1 May.

The housing situation of the clients improved in comparison with the situation in 2019. The share of clients without permanent accommodation was the biggest among supervised parolees. On 1 May, 23 per cent (n=245) of the clients were homeless or stayed in a temporary accommodation, a dormitory, or an institution. Their share decreased by 3 percentage points since 2019. Quite a many (19%) of supervised young offenders sentenced to conditional imprisonment have some other than permanent accommodation although their share decreased clearly by 4 percentage points. Among community service clients, the share of those with permanent accommodation has varied between 85 and 89 per cent over the past ten years. The housing situation of the clients serving a monitoring sentence is good because stable living conditions are included in the preconditions of the sentence.

3.4 Participation in activities among community sanction clients

Activities available to community sanction clients include activity programmes aimed to influence criminal behaviour as well as measures linked to substance abuse treatment. The most popular programmes were the Behaviour-Interviewing-Change Programme and the Traffic Safety Programme. Treatment periods provided by substance abuse services were also commonly used support measures in other forms of community sanctions except for the monitoring sentence. All in all, 340 clients, who completed their sentence in 2020, took part in activity programmes or substance abuse programmes that year*. Most of those who participated in programmes were sentenced to community service. The total number of participants in the programmes decreased by 8 per cent in comparison with the sanctions that ended in 2019. The main reason is the reduced number of participants in the most common programme (Behaviour-Interviewing-Change Programme) in community service.

*Two clients serving juvenile punishment took part in activity programmes; not included in Table 41.

3.5 Punitive measures applied in community sanctions

The total number of punitive measures (1 621) imposed on community sanction clients dropped clearly, i.e. over 20 per cent, since 2019. The biggest relative decrease was in the number of punitive measures imposed on supervised parolees. This was explained by the restrictions on face-to-face communication with supervision clients due to the coronavirus pandemic. Reaching the clients by telephone was relatively successful and violations related to the obligations of the supervision appointments were less common than in face-to-face appointments. Understandably, the number of supervised parolees and supervised young offenders sentenced to conditional imprisonment requested to be fetched by the police dropped clearly.

As in the previous years, when proportioned to the average number of clients, punitive measures were used most in monitoring sentences. However, the relative number decreased considerably since 2019 as the average number of clients was clearly higher and the number of punitive measures decreased. In community service, the lower number of implemented punitive measures was explained by the difficulties in actually serving community service as the restrictions due to the pandemic closed the community service places and a record number of enforcements were postponed or suspended for a fixed period. Enforcements suspended for a fixed period are not included in the statistics on punitive measures and do not affect the calculation of the average number of clients.

Table 1. Prisoners in prisons according to gender, prisoner group, and prison type at the beginning and end of 2020

	Total		Sentenced prisoners		Fine default prisoners		Remand prisoners	
	Total	Women	Total	Women	Total	Women	Total	Women
At the beginning of the year								
All prisons	2910	241	2166	164	58	11	686	66
Closed prisons	1926	151	1187	75	53	10	686	66
Open prisons	984	90	979	89	5	1	0	0

At the end of the year								
All prisons	2743	220	2132	154	44	10	567	56
Closed prisons	1766	132	1168	70	31	6	567	56
Open prisons	977	88	964	84	13	4	0	0

Table 2. Average daily number of prisoners according to prisoner group in 2011–2020

Year	Sentenced prisoners	Fine default prisoners	Remand prisoners	Total	Women	Share of women of all prisoners, %
2011	2612	53	598	3262	234	7
2012	2561	49	626	3236	224	7
2013	2549	48	578	3175	242	8
2014	2425	52	619	3097	239	8
2015	2419	52	597	3068	231	8
2016	2478	57	585	3120	229	7
2017	2383	55	597	3035	230	8
2018	2304	59	547	2910	218	7
2019	2247	66	639	2952	228	8
2020	2104	63	632	2800	233	8

Table 3. Average number of under 21-year-old remand and sentenced prisoners in 2011–2020

Year	15–17-year-olds	18–20-year-olds	Under 21-year-olds in total	All prisoners	Share of young prisoners of all prisoners, %
2011	10	70	80	3262	2,5
2012	6	79	85	3236	2,6
2013	8	74	82	3175	2,6
2014	5	78	83	3097	2,7
2015	8	73	81	3068	2,6
2016	9	80	89	3120	2,9
2017	10	85	95	3035	3,1
2018	5	78	83	2910	2,9
2019	7	76	83	2952	2,8
2020	7	79	86	2800	3,1

Table 4. Persons arriving in prison from freedom according to prisoner group, gender, and prison type in 2020

	All prisons			Closed prisons			Open prisons		
	Men	Women	Total	Men	Women	Total	Men	Women	Total
From freedom in total	4661	617	5278	4393	570	4963	268	47	315
Fine default prisoners	991	230	1221	987	228	1215	4	2	6
Sentenced prisoners	1638	159	1797	1374	114	1488	264	45	309
15–17-year-olds	0	0	0	0	0	0	0	0	0
18–20-year-olds	27	0	27	23	0	23	4	0	4
over 21-year-olds	1611	159	1770	1351	114	1465	260	45	305
Remand prisoners	2032	228	2260	2032	228	2260	0	0	0
15–17-year-olds	36	3	39	36	3	39	0	0	0
18–20-year-olds	165	27	192	165	27	192	0	0	0
over 21-year-olds	1831	198	2029	1831	198	2029	0	0	0

Table 5. Persons arriving in prison from freedom according to prisoner group in 2011–2020

Year	Sentenced prisoners		Fine default prisoners		Remand prisoners		Total	
	Total	Women	Total	Women	Total	Women	Total	Women
2011	3097	225	1277	166	2062	152	6436	543
2012	2744	200	1135	130	2187	157	6066	487
2013	2640	220	1179	165	1990	169	5809	554
2014	2525	198	1244	154	1980	148	5749	500
2015	2453	196	1203	160	2015	194	5671	550
2016	2439	214	1344	212	1949	184	5732	610
2017	2233	169	1251	200	1917	166	5401	535
2018	2325	188	1321	209	1900	188	5546	585
2019	2302	186	1472	256	2160	218	5934	660
2020	1797	159	1221	230	2260	228	5278	617

Table 6. Released prisoners according to grounds for release, gender, and prison type in 2020

	Closed prisons			Open prisons			All prisons		
	Men	Women	Total	Men	Women	Total	Men	Women	Total
Released prisoners in total	3555	486	4041	1210	151	1361	4765	637	5402
1. Sentence served completely	882	211	1093	47	11	58	929	222	1151
Fine default prisoners	881	209	1090	45	10	55	926	219	1145
Sentenced prisoners	1	2	3	2	1	3	3	3	6
2. Pardon of the President of the Republic from further serving of sentence	0	0	0	0	0	0	0	0	0
3. Released on parole	1339	103	1442	1159	140	1299	2498	243	2741
By pardon of the President of the Republic	0	0	0	0	0	0	0	0	0
By decision of the prison director	0	0	0	1	0	1	1	0	1
By decision of the Criminal Sanctions Agency	0	0	0	0	0	0	0	0	0
Based on the decision on the sentence term	1333	102	1435	1146	139	1285	2479	241	2720
By decision of the Helsinki Court of Appeal	5	1	6	12	1	13	17	2	19
By decision of the Supreme Court	1	0	1	0	0	0	1	0	1
By decision of the Hague International Criminal Court	0	0	0	0	0	0	0	0	0
4. Released from remand imprisonment	1321	171	1492	0	0	0	1321	171	1492
Charge dismissed	3	0	3	0	0	0	3	0	3
Hearing postponed	0	0	0	0	0	0	0	0	0
Sentenced to unconditional imprisonment but released	31	4	35	0	0	0	31	4	35
Sentenced to conditional imprisonment	61	6	67	0	0	0	61	6	67
Other reason	1226	161	1387	0	0	0	1226	161	1387
5. Other grounds	13	1	14	4	0	4	17	1	18
Dead	6	2	8	1	0	1	7	2	9
Transferred to another country	37	1	38	3	0	3	40	1	41

Table 7. Released sentenced prisoners according to served sentence term, gender, and prison type in 2020

Served sentence term	Closed prisons			Open prisons			All prisons		
	Men	Women	Total	Men	Women	Total	Men	Women	Total
Total	1346	105	1451	1165	141	1306	2511	246	2757
-1 month	230	27	257	98	16	114	328	43	371
Over 1 month to 2 months	238	24	262	156	19	175	394	43	437
Over 2 months to 3 months	128	7	135	98	14	112	226	21	247
Over 3 months to 6 months	175	9	184	142	13	155	317	22	339
Over 6 months to 12 months	188	16	204	186	18	204	374	34	408
Over 1 year to 2 years	235	13	248	307	48	355	542	61	603
Over 2 years to 4 years	112	7	119	132	7	139	244	14	258
Over 4 years	40	2	42	46	6	52	86	8	94
Average length	10,7	8,9	10,6	14,2	12,4	14,0	12,3	10,9	12,2

Table 8. Length of conversion sentences for unpaid fines completed in 2020

Prisoners serving only conversion sentence for unpaid fines	Men	Women	Total
At most 10 days	426	105	531
11-30 days	343	55	398
31-60 days	145	52	197
61-90 days	19	8	27
Total	933	220	1153

Sentenced and remand prisoners serving conversion sentence for unpaid fines	Men	Women	Total
At most 10 days	82	6	88
11-30 days	209	18	227
31-60 days	156	16	172
61-90 days	84	20	104
Total	531	60	591

Table 9. Released prisoners according to prisoner group and gender in 2011–2020

Year	Sentenced prisoners		Fine default prisoners		Remand prisoners		All in total	
	Total	Women	Total	Women	Total	Women	Total	Women
2011	3982	291	1251	160	1125	101	6358	552
2012	3728	261	1104	132	1241	82	6073	475
2013	3582	298	1155	160	1114	91	5851	549
2014	3386	262	1216	148	1098	85	5700	495
2015	3304	278	1167	156	1102	130	5573	564
2016	3223	254	1247	192	1061	117	5531	563
2017	3198	250	1246	207	1132	114	5576	571
2018	3166	247	1259	199	1106	126	5531	572
2019	3138	237	1389	249	1280	143	5807	629
2020	2757	246	1153	220	1492	171	5402	637

Table 10. Length of time served in prison (%) by released prisoners in 2011–2020

Served sentence term	2011	2012	2013	2014	2015	2016	2017	2018	2019	2020
–1 month	16	15	13	14	14	14	13	15	14	13
Over 1 month to 2 months	21	20	18	18	19	17	17	19	18	16
Over 2 months to 3 months	11	9	10	9	9	8	9	8	9	9
Over 3 months to 6 months	16	14	16	15	14	16	15	13	14	12
Over 6 months to 12 months	14	17	17	15	16	14	15	15	14	15
Over 1 year to 2 years	14	15	17	19	19	19	21	19	18	22
Over 2 years to 4 years	6	7	7	7	7	8	9	8	8	9
Over 4 years	3	2	3	3	3	4	3	3	3	3
Total	100	100	100	100	100	100	100	100	100	100
N	3982	3728	3582	3386	3304	3223	3198	3166	3138	2757

Table 11. Prisoners released on parole in 2011–2020

	2011	2012	2013	2014	2015	2016	2017	2018	2019	2020
Released on parole in total	3935	3682	3533	3352	3266	3187	3170	3142	3114	2741
By decision of the prison director / board	3929	3677	3525	3339	1281	0	0	1	0	1
Based on the decision on the sentence term	-	-	-	-	1969	3172	3151	3125	3098	2720
By decision of the Criminal Sanctions Agency	0	0	0	0	0	0	3	0	1	0
By pardon of the President of the Republic	4	1	0	0	0	2	0	0	1	0
By decision of the Helsinki Court of Appeal	2	4	8	12	16	13	16	17	14	19
By decision of the Supreme Court	0	0	0	0	0	0	0	0	0	1
By decision of the Hague International Criminal Court	0	0	0	1	0	0	0	0	0	0
Placed under supervision	759	742	753	745	720	759	794	782	817	795

Table 12. Number of life sentence prisoners at the beginning of the year in 2011–2021

Year	Number of life sentence prisoners at the beginning of the year	Commenced life imprisonments within the year	Released life sentence prisoners	Average length of sentences served by released life sentence prisoners (years)
2011	164	15	2	15,0
2012	175	27	3	22,4
2013	200	14	6	13,6
2014	208	9	12	14,4
2015	203	15	16	13,8
2016	202	12	13	14,0
2017	200	12	15	14,6
2018	195	9	16	14,5
2019	187	10	14	14,9
2020	183	20	19	15,3
2021	182	-	-	-

Table 13. Probationary liberty under supervision in 2011–2020

Year	Started	Päätyneet	Ended	Cancelled % of ended	In probationary liberty on average daily	Average length of probationary liberty (days)
2011	426	394	69	18	113	100
2012	544	526	94	18	150	101
2013	504	513	65	13	151	108
2014	615	596	98	16	168	102
2015	702	657	104	16	209	108
2016	690	687	123	18	203	110
2017	754	774	125	16	214	104
2018	749	754	146	19	207	99
2019	854	795	137	17	216	97
2020	828	871	154	18	227	97

Table 14. Principal offence of sentenced prisoners on 1 May in 2011–2020 (%)

		2011	2012	2013	2014	2015	2016	2017	2018	2019	2020
Robbery	Total	7	7	7	7	7	9	8	8	9	9
	Women	7	7	5	7	4	4	5	4	7	11
Theft	Total	10	11	12	11	10	10	10	9	9	7
	Women	6	12	10	8	7	10	12	9	8	9
Other offence against property	Total	6	8	8	7	7	8	8	9	8	7
	Women	9	10	10	7	8	12	12	14	14	14
Homicide	Total	23	23	23	24	24	21	21	20	21	23
	Women	31	34	32	28	33	32	28	26	27	24
Other violent offence	Total	21	20	18	17	17	17	17	17	16	16
	Women	17	12	21	19	18	16	17	18	16	16
Sexual offence	Total	4	4	4	4	5	5	7	6	6	7
	Women	4	2	2	2	1	1	1	2	1	2
Narcotics offences	Total	17	17	18	19	19	19	20	21	21	23
	Women	16	19	14	23	21	19	20	18	16	17
Drunken driving	Total	10	9	9	7	8	8	7	8	8	6
	Women	6	3	6	5	5	4	2	5	9	4
Other offence	Total	2	2	2	2	2	2	2	2	3	2
	Women	4	1	1	2	3	2	3	4	1	2
Total	Total	100	100	100	100	100	100	100	100	100	100
	Women	100	100	100	100	100	100	100	100	100	100
Total	Total	2639	2615	2699	2471	2513	2498	2423	2365	2260	2089
	Women	180	177	201	190	181	167	181	174	164	161

Table 15. Age groups of sentenced prisoners on 1 May in 2011–2020 (%)

		2011	2012	2013	2014	2015	2016	2017	2018	2019	2020
15–20 y	Total	1	2	2	2	2	1	2	2	2	2
	Women	0	1	0	0	1	2	2	1	2	3
21–24 y	Total	8	8	8	8	8	8	8	9	9	9
	Women	9	5	7	7	7	10	12	5	9	7
25–29 y	Total	20	19	19	17	16	17	17	17	18	18
	Women	20	19	23	19	16	14	14	18	18	19
30–39 y	Total	33	35	34	35	36	35	35	35	35	35
	Women	31	35	28	27	31	33	29	33	31	39
40–49 y	Total	22	22	22	23	22	22	23	21	21	21
	Women	26	31	26	27	24	20	24	25	23	18
50– y	Total	14	13	15	15	16	16	15	16	15	15
	Women	14	11	16	19	20	22	20	17	17	14
Total	Total	100	100	100	100	100	100	100	100	100	100
	Women	100	100	100	100	100	100	100	100	100	100
N	Total	2639	2615	2699	2471	2513	2498	2423	2365	2260	2089
	Women	180	177	201	190	181	167	181	174	164	161

Table 16. Calculated length of time served in prison by sentenced prisoners on 1 May in 2011–2020 (%)

		2011	2012	2013	2014	2015	2016	2017	2018	2019	2020
< 3 months	Total	9	8	8	9	8	7	6	7	8	3
	Women	7	7	9	7	7	7	6	8	10	3
3 < 6 months	Total	10	8	9	7	8	9	8	7	8	7
	Women	12	6	9	9	10	7	8	6	8	4
6 < 12 months	Total	15	16	15	14	14	14	13	14	13	13
	Women	16	17	15	13	12	16	17	15	16	15
1 < 2 years	Total	25	25	26	27	27	27	27	28	27	30
	Women	26	26	27	31	28	30	27	29	31	42
2 < 4 years	Total	19	20	20	19	20	20	22	21	21	23
	Women	19	21	18	18	18	17	18	21	15	17
4 < 8 years	Total	15	13	12	14	13	13	13	12	12	13
	Women	15	18	15	14	16	13	14	12	10	10
8– years	Total	8	9	9	10	10	10	10	10	10	11
	Women	6	6	7	8	8	10	9	9	9	10
Total	Total	100	100	100	100	100	100	100	100	100	100
	Women	100	100	100	100	100	100	100	100	100	100
N	Total	2576	2581	2662	2435	2466	2456	2385	2324	2213	2043
	Women	177	176	201	190	179	166	179	173	160	154

* The table excludes prisoners whose sentence term had not yet been calculated or who were at large.

Table 17. Number of previous prison sentences of sentenced prisoners on 1 May in 2011–2020 (%)

		2011	2012	2013	2014	2015	2016	2017	2018	2019	2020
1st time	Total	33	34	36	37	37	36	38	39	38	42
	Women	53	50	56	57	56	53	54	51	53	62
2nd time	Total	13	14	13	13	13	13	14	14	15	14
	Women	18	15	14	13	14	15	13	14	14	14
3rd–7th time	Total	35	35	34	32	32	32	31	30	30	28
	Women	24	26	27	23	23	24	20	26	25	18
8th– time	Total	20	18	18	18	18	19	18	17	17	16
	Women	4	9	4	7	7	8	13	9	8	6
Total	Total	100	100	100	100	100	100	100	100	100	100
	Women	100	100	100	100	100	100	100	100	100	100
N	Total	2631	2609	2694	2470	2512	2494	2421	2364	2260	2088
	Women	180	177	201	190	181	167	181	174	164	161

Table 18. Average number of foreign prisoners according to prisoner group and their share of all prisoners in 2011–2020

Year	Foreign prisoners serving a sentence	Foreign remand prisoners	Foreign prisoners total	All prisoners	Share of foreign prisoners of all prisoners, %
2011	243	201	444	3262	14
2012	261	209	470	3236	15
2013	279	185	464	3175	15
2014	266	217	483	3097	16
2015	277	200	477	3068	16
2016	314	223	537	3120	17
2017	334	206	540	3035	18
2018	295	187	482	2910	17
2019	293	206	499	2952	17
2020	282	193	475	2800	17

Table 19. Principal offence of foreign sentenced prisoners on 1 May in 2011–2020 (%)

	2011	2012	2013	2014	2015	2016	2017	2018	2019	2020
Robbery	8	3	5	11	5	6	5	7	5	3
Theft	13	15	16	12	15	12	7	7	13	8
Other offence against property	4	6	3	4	3	3	3	3	2	3
Homicide	6	6	7	10	11	10	10	10	10	10
Other violent offence	7	11	7	4	6	7	10	9	9	8
Sexual offence	9	9	8	9	10	6	14	9	11	15
Narcotics offence	48	44	49	46	46	50	46	49	44	49
Drunken driving	1	4	3	3	1	5	3	4	4	2
Other offences	4	1	2	2	2	3	2	2	1	3
Total	100	100	100	100	100	100	100	100	100	100
N	227	267	276	256	294	307	324	306	292	279

Table 20. Nationalities of foreign prisoners on 1 May 2020

	N		N
Afghanistan	10	Lithuania	27
Albania	29	Mexico	1
Algeria	4	Moldova	1
Angola	2	Montenegro	1
Argentina	1	Morocco	4
Armenia	1	Netherlands	6
Australia	2	Nigeria	6
Belarus	2	Pakistan	1
Bolivia	1	Peru	2
Bulgaria	5	Philippines	1
China	3	Poland	4
Colombia	3	Portugal	3
Croatia	1	Romania	34
Czech Republic	3	Russia	16
Dem. Rep. of the Congo	4	Rwanda	1
Denmark	4	Senegal	6
Egypt	2	Serbia	5
Eritrea	3	Sierra Leone	1
Estonia	74	Somalia	17
Ethiopia	3	Spain	8
France	5	Sri Lanka	1
Gambia	12	Sudan	3
Georgia	7	Sweden	23
Ghana	4	Syria	2
Germany	7	Tajikistan	1
Greece	3	Tanzania	1
Guinea	1	Thailand	1
Hungary	1	Tunisia	5
India	3	Turkey	5
Iran	5	Ukraine	4
Iraq	47	United Kingdom	5
Italy	1	United States	1
Ivory Coast	1	Vietnam	1
Kenya	4	Stateless	7
Kosovo	2	Unknown	1
Latvia	8	Total	474

Table 21. Prison leaves in 2011–2020

Year	Applied	Granted		Cancelled		Used		Conditions fulfilled		Conditions breached	
	N	N	%	N	%	N	%	N	%	N	%
2011	14768	11016	75	293	3	10723	97	10256	96	467	4,4
2012	14749	10984	74	318	3	10666	97	10212	96	454	4,3
2013	15921	11829	74	399	3	11430	97	10921	96	509	4,5
2014	15579	11639	75	327	3	11312	97	10868	96	444	3,9
2015	16550	12708	77	405	3	12303	97	11832	96	471	3,8
2016	17776	13813	78	465	3	13348	97	12857	96	491	3,7
2017	17852	13844	78	464	3	13380	97	12926	97	454	3,4
2018	17243	13557	79	390	3	13167	97	12701	96	466	3,5
2019	16845	13248	79	481	4	12767	96	12349	97	418	3,3
2020	11499	8258	72	477	6	7781	94	7503	96	278	3,6

Table 22. Escapes and unauthorised leaves in 2011–2020

Year	Escapes total	Escapes from closed prisons	Escapes from inside prison walls	Unauthorised leaves from open prisons	Unauthorised leaves from rehabilitation institutions
2011	12	7	1	82	5
2012	17	11	6	62	15
2013	15	9	5	56	16
2014	14	13	7	39	9
2015	10	8	2	42	29
2016	10	9	4	55	9
2017	8	7	5	63	10
2018	11	5	1	52	8
2019	6	3	1	38	7
2020	7	5	2	73	8

Table 23. Prisoners' use of time in 2011–2020 (%)

	2011	2012	2013	2014	2015	2016	2017	2018	2019	2020
Work activities	32	32	31	31	32	32	31	32	32	31
Education	8	10	8	7	8	7	8	9	8	9
Other activities	9	10	10	11	12	13	15	15	15	16
Activities in total	49	52	50	49	52	52	54	56	55	56
Not placed in activities	38	36	38	39	35	37	32	27	28	28
Other passive time (e.G. Sick)	13	12	11	12	13	11	14	17	17	16
Not in activities in total	51	48	50	51	48	48	46	44	45	44
Prisoners in activities av./Day	1589	1739	1593	1539	1605	1654	1657	1629	1623	1568
Prisoners in total av./Day	3262	3333	3157	3099	3102	3120	3035	2910	2952	2800

Table 24. Prisoners and prisons in 1981–2020

Daily average number of prisoners						Vapaudesta rangaistuslaitokseen saapuneet					
Year	Total	Women	Fine default prisoners	Remand prisoners	Foreign prisoners	Total	As sentenced prisoners		As fine default prisoners	As remand prisoners	
							Total	Under 21-year-olds		Total	Under 21-year-olds
1981	4883	142	135	553	8	9840	5080	291	1470	3117	447
1982	4766	135	128	582	12	10194	5209	320	1347	3459	540
1983	4709	161	150	571	8	10132	4966	360	1595	3327	588
1984	4524	153	138	536	10	9671	5204	390	1299	3114	730
1985	4411	137	113	500	15	9307	5277	408	1161	2846	672
1986	4219	126	132	510	11	9216	5010	297	1337	2867	402
1987	4175	127	66	468	12	9467	5392	285	1429	2646	438
1988	3972	125	91	421	11	9379	5096	260	1821	2462	382
1989	3389	112	98	350	11	8648	5237	292	1720	1691	205
1990	3441	109	95	372	20	8831	5349	201	1556	1926	325
1991	3467	110	137	293	28	8874	5411	232	2016	1447	247
1992	3511	110	189	263	43	9851	5769	268	2557	1525	248
1993	3421	119	245	248	48	9435	5055	234	2944	1436	274
1994	3275	122	221	259	57	8711	4424	205	2661	1626	306
1995	3248	133	173	289	73	7755	3910	169	2273	1572	298
1996	3197	149	132	300	94	6594	3254	172	1703	1637	279
1997	2974	144	119	295	116	6201	2937	134	1671	1593	205
1998	2809	140	96	292	130	5803	2982	120	1318	1503	198
1999	2743	126	102	354	138	5838	2858	113	1391	1589	145
2000	2855	144	121	376	173	6561	3312	122	1581	1668	220
2001	3135	159	149	457	248	6832	3248	184	1698	1886	278
2002	3433	204	190	478	293	7451	3452	106	2156	1843	219
2003	3578	205	198	492	291	7654	3520	123	2223	1911	211
2004	3577	206	81	473	284	6575	3863	129	867	1845	189
2005	3888	242	179	519	282	7552	3779	95	1843	1930	178
2006	3778	246	189	463	306	7292	3496	72	2098	1698	155
2007	3551	244	134	506	307	7303	3568	57	1856	1879	177
2008	3526	232	121	559	325	7321	3539	88	1852	1930	224
2009	3492	246	83	569	370	7059	3469	104	1627	1963	180
2010	3291	246	57	599	394	6545	3244	83	1303	1998	186
2011	3262	234	53	598	444	6436	3097	80	1277	2062	200
2012	3236	224	49	626	470	6066	2744	65	1135	2187	215
2013	3175	242	48	578	464	5809	2640	54	1179	1990	187
2014	3097	239	52	619	483	5749	2525	52	1244	1980	198
2015	3086	231	52	597	477	5671	2453	42	1203	2015	206
2016	3120	229	57	585	537	5732	2439	37	1344	1949	200
2017	3035	230	55	597	540	5401	2234	44	1251	1916	190
2018	2910	218	59	547	482	5546	2325	42	1321	1900	164
2019	2952	228	66	639	499	5934	2302	40	1472	2160	206
2020	2800	233	63	632	475	5278	1797	27	1221	2260	231

Table 24 continues on the next page.

Table 24. Prisoners and prisons in 1981–2020

Vuosi	Released from prisons	Prisons 31.12.	Available prison places	
			In all prisons	In closed prisons (%)
1981	10197	18	4618	73
1982	10200	18	4665	73
1983	10183	19	4629	73
1984	9884	18	4695	74
1985	9516	18	4693	74
1986	9240	18	4738	72
1987	9744	19	4716	75
1988	9707	21	4700	75
1989	9272	21	4739	75
1990	8561	21	4214	73
1991	9183	22	4210	71
1992	9755	23	4220	72
1993	9593	24	4286	73
1994	8984	25	4102	72
1995	7661	24	4095	69
1996	7028	24	3907	71
1997	6314	24	3827	71
1998	5883	23	3508	71
1999	5972	23	3494	71
2000	6272	22	3357	71
2001	6516	22	3399	71
2002	7245	22	3437	72
2003	7511	21	3286	76
2004	6322	21	3479	72
2005	7063	21	3460	73
2006	7672	26	3607	71
2007	7352	26	3540	71
2008	7196	26	3517	72
2009	7246	26	3298	70
2010	6506	28	3113	67
2011	6358	27	3092	67
2012	6073	26	3089	71
2013	5851	26	3089	70
2014	5700	26	3083	69
2015	5573	26	3007	70
2016	5531	26	2959	67
2017	5576	26	2922	66
2018	5531	26	2975	67
2019	5807	26	2878	68
2020	5402	26	2997	68

Table 25. Recidivism of sentenced prisoners released in 2006–2015 (%) within a five-year follow-up period according to gender, age, and previous prison sentences

		2006	2007	2008	2009	2010	2011	2012	2013	2014	2015
Gender	Total	64	64	61	58	59	61	58	58	57	58
	Man	65	65	62	58	60	61	59	59	58	60
	Woman	56	50	48	48	50	51	46	46	44	44
Age when released	15<21	80	82	80	81	78	87	74	75	91	79
	21<30	72	73	72	67	70	68	67	70	66	66
	30<40	67	67	64	61	65	65	60	62	59	63
	40<50	59	56	53	51	50	55	51	50	51	52
	50-	44	40	40	37	35	39	38	34	35	39
Previous prison sentences	1	49	47	45	39	41	41	36	38	36	37
	2	63	63	60	57	60	59	57	60	55	56
	3-5	72	68	69	64	66	68	69	68	65	66
	6-	78	79	75	75	73	75	74	73	75	78
Total N		4558	4310	4162	4243	3915	3659	3456	3304	3098	3035

Table 26. Average daily number of community sanction clients in 2011–2020*

Year	Supervision of persons sentenced to conditional imprisonment, young persons	Supervision of persons sentenced to conditional imprisonment, adults	Juvenile punishment	Community service	Supervision of parolees	Monitoring sentence	Total
2011	1178	-	14	1490	1177	-	3859
2012	1084	-	10	1458	1074	18	3645
2013	908	-	7	1344	1036	29	3324
2014	781	-	10	1247	1054	45	3137
2015	786	-	9	1217	1033	48	3093
2016	819	-	9	1120	1067	47	3061
2017	727	-	7	1096	1093	45	2967
2018	729	-	8	1072	1116	33	2959
2019	726	-	9	1154	1116	26	3031
2020	672	2	6	1220	1144	39	3083

*The calculation method of the average number of community sanction clients was revised in 2012: Earlier we counted the number of enforcements, now we count the number of clients.

Table 27. Enforcement of community service in 2011–2020

	2011	2012	2013	2014	2015	2016	2017	2018	2019	2020
Requested suitability assessments	5624	5357	4589	4296	4037	3858	3850	4057	3872	4190
Prepared suitability assessments*	3929	4089	3610	3451	3136	2990	3067	3095	2912	3184
Given positive statements	3358	3414	3124	2985	2744	2602	2600	2574	2436	2679
Given positive statements %	85	83	87	87	88	87	85	83	84	84
New enforced community service sentences	2927	2741	2523	2359	2329	2037	1938	2009	1930	1752
Started community service sentences	2751	2704	2366	2204	2136	1914	1792	1741	1821	1488
Completed community service sentences	2330	2296	2086	1908	1832	1643	1489	1436	1445	1166
Ended community service sentences**	2761	2827	2507	2354	2210	2062	1849	1828	1774	1503
Converted into imprisonment by a District Court's decision	402	482	373	375	326	359	321	343	280	294
% of ended sentences	15	17	15	16	15	17	17	19	16	20
Served community service hours in a year	220440	225158	199514	180749	173658	151396	140408	136865	143786	118345
Community service clients on 31 Dec.	1441	1302	1217	1157	1127	1021	1015	1039	1128	1175
Daily average of community sanctions clients	1490	1458	1344	1247	1217	1120	1096	1072	1154	1220

*Does not include cases where it was not possible to prepare a statement.

**Ended community service sentences include completed and converted sentences, deaths, and other (the court has regarded the enforcement to be completed).

Table 28. Supervision of parolees in 2011–2020

	2011	2012	2013	2014	2015	2016	2017	2018	2019	2020
New supervisions in a year	768	739	757	752	733	762	750	785	817	774
Under supervision in total in a year	2003	1860	1791	1688	1710	1558	1588	1761	1796	1796
Supervision cancelled	100	100	103	110	122	119	117	97	124	92
Probationary period ended	693	658	594	578	597	583	591	635	653	636
Under supervision on 31 Dec.	1121	1034	1035	1042	1023	1043	1097	1108	1114	1136
Daily average of supervised persons	1177	1074	1036	1054	1033	1067	1093	1116	1116	1144

Table 29. Supervision of persons sentenced to conditional imprisonment (young persons) in 2011–2020

	2011	2012	2013	2014	2015	2016	2017	2018	2019	2020
New supervisions	751	901	757	743	772	707	665	700	626	677
Under supervision in total in a year	1940	2279	1775	1493	1452	1241	1133	1302	1266	1259
Supervision cancelled	47	40	22	24	23	27	26	21	14	7
Supervision period ended	1	376	764	704	624	699	647	532	605	591
Probationary period ended	594	560	135	68	40	23	23	26	23	16
Under supervision on 31 Dec.	1378	1018	829	757	795	762	715	743	687	708
Daily average of supervised persons	1178	1084	908	781	786	819	727	729	726	672

Table 30. Supervision of persons sentenced to conditional imprisonment (adults) in 2011–2020*

	2011	2012	2013	2014	2015	2016	2017	2018	2019	2020
New supervisions	-	-	-	-	-	-	-	-	-	7
Under supervision in total in a year	-	-	-	-	-	-	-	-	-	7
Supervision cancelled	-	-	-	-	-	-	-	-	-	0
Supervision period ended	-	-	-	-	-	-	-	-	-	1
Probationary period ended	-	-	-	-	-	-	-	-	-	0
Under supervision on 31 Dec.	-	-	-	-	-	-	-	-	-	6
Daily average of supervised persons	-	-	-	-	-	-	-	-	-	2

*At the beginning of 2020, it became possible to place an adult, i.e. a person who has committed an offence when aged 21 or over, under supervision to reinforce conditional imprisonment.

Table 31. Enforcement of juvenile punishment in 2011–2020

	2011	2012	2013	2014	2015	2016	2017	2018	2019	2020
New enforced juvenile punishments	15	10	6	10	8	6	5	11	7	7
Completed juvenile punishments	12	11	3	5	6	5	7	4	6	5
Converted into imprisonment by a District Court's decision	2	2	2	1	1	0	0	0	1	1
Daily average of persons serving juvenile punishments	14	10	7	10	9	9	7	8	9	6

Table 32. Enforcement of monitoring sentence in 2012–2020

	2012	2013	2014	2015	2016	2017	2018	2019	2020
Requested suitability assessments	1 288	949	825	828	704	654	700	735	620
Prepared suitability assessments	890	603	578	573	538	465	497	538	464
Given positive statements	339	320	328	340	328	299	297	325	271
Given positive statements %	38	53	57	59	61	64	60	60	58
New enforced monitoring sentences	198	223	272	270	261	246	207	197	188
Started monitoring sentences	143	196	229	247	240	237	183	162	180
Ended monitoring sentences	110	162	201	221	241	224	177	157	164
Converted into imprisonment by a District Court's decision	9	23	42	21	33	26	25	23	20
% of ended sentences	8	14	21	10	14	12	14	15	12
Average length of served time (days)	46	64	58	63	60	62	55	47	50
In enforcement on 31 Dec.	16	16	44	51	34	32	26	22	37
Daily average of enforcements	18	29	45	48	47	45	33	26	39

*Does not include cases where it was not possible to prepare a statement.

Table 33. Principal offence of community sanction clients whose sanction ended in 2015–2020 (%)

	2015						2016					
	SCSY	SP	CS	JP	MS	Total	SCSY	SP	CS	JP	MS	Total
Offence against life and health	22	41	17	0	16	22	23	41	16	40	7	22
Narcotics offence	9	16	8	14	2	9	10	18	7	0	5	10
Drunken driving	16	4	46	29	47	32	17	3	43	0	55	30
Traffic offence	5	1	2	14	2	3	4	1	4	0	2	3
Offence against property	38	28	20	43	11	24	38	28	22	60	12	26
Sexual offence	3	8	3	0	0	4	4	7	4	0	0	4
Other	7	2	4	0	22	5	6	3	4	0	20	5
Total	100	100	100	100	100	100	100	100	100	100	100	100
N	691	742	2210	7	221	3871	763	734	2062	5	241	3805

	2017						2018					
	SCSY	SP	CS	JP	MS	Total	SCSY	SP	CS	JP	MS	Total
Offence against life and health	18	40	16	14	13	21	24	34	16	25	14	22
Narcotics offence	12	20	10	0	3	12	13	17	8	0	5	11
Drunken driving	16	2	43	14	50	29	17	5	44	0	54	31
Traffic offence	4	2	3	0	4	3	6	1	4	25	4	4
Offence against property	42	25	20	57	8	24	31	28	20	50	11	23
Sexual offence	3	9	4	0	1	5	4	11	4	0	1	5
Other	5	2	5	14	21	5	6	3	4	0	11	5
Total	100	100	100	100	100	100	100	100	100	100	100	100
N	715	734	1849	7	224	3529	610	754	1828	4	177	3373

	2019						2020					
	SCSY	SP	CS	JP	MS	Total	SCSY*	SP	CS	JP	MS	Total
Offence against life and health	21	34	14	14	14	20	19	33	12	17	11	18
Narcotics offence	17	19	9	14	7	13	20	22	12	17	4	16
Drunken driving	16	5	42	0	56	29	13	2	43	0	57	28
Traffic offence	5	2	5	0	3	4	6	2	4	0	3	4
Offence against property	32	28	20	57	13	24	34	28	22	67	15	26
Sexual offence	3	9	4	0	1	5	4	10	4	0	1	5
Other	7	3	5	14	6	5	4	2	4	0	9	4
Total	100	100	100	100	100	100	100	100	100	100	100	100
N	663	793	1774	7	157	3394	623	743	1502	6	164	3038

SCSY=supervision of conditionally sentenced young persons, CS=community service, JP=juvenile punishment, MS=monitoring sentence.

*Includes supervised adults sentenced to conditional imprisonment (N=2)

Table 34. Age distribution of community sanction clients according to sanction (%) on 1 May in 2011–2020

	15-17	18-20	21-24	25-29	30-39	40-49	50-	Total	N
Juvenile punishment									
2011	55	45	0	0	0	0	0	100	11
2012	45	55	0	0	0	0	0	100	11
2013	0	100	0	0	0	0	0	100	6
2014	60	40	0	0	0	0	0	100	10
2015	9	82	9	0	0	0	0	100	11
2016	11	78	11	0	0	0	0	100	9
2017	38	63	0	0	0	0	0	100	8
2018	22	67	11	0	0	0	0	100	9
2019	18	73	9	0	0	0	0	100	11
2020	14	86	0	0	0	0	0	100	7

Supervision of persons sentenced to conditional imprisonment									
2011	9	58	34	0	0	0	0	100	1042
2012	4	53	42	0	0	0	0	100	1146
2013	3	34	62	1	0	0	0	100	950
2014	9	57	34	0	0	0	0	100	782
2015	7	57	35	1	0	0	0	100	800
2016	9	54	36	0	0	0	0	100	846
2017	9	52	39	0	0	0	0	100	748
2018	9	52	39	1	0	0	0	100	739
2019	7	53	40	0	0	0	0	100	754
2020 *	7	56	37	0	0	0	0	100	695

Supervision of parolees									
2011	0	4	15	14	30	21	16	100	1210
2012	0	2	13	13	30	25	16	100	1096
2013	0	3	12	13	32	24	16	100	1035
2014	0	3	14	12	30	24	18	100	1069
2015	0	4	14	13	30	22	17	100	1067
2016	0	4	15	13	30	21	17	100	1094
2017	0	4	14	14	30	19	19	100	1095
2018	0	3	16	14	30	20	17	100	1106
2019	0	4	16	15	29	19	16	100	1111
2020	0	3	17	15	30	18	17	100	1147

Table 34 continues on the next page.

Table 34. Age distribution of community sanction clients according to sanction (%) on 1 May in 2011–2020

	15-17	18-20	21-24	25-29	30-39	40-49	50-	Total	N
Community service									
2011	0	4	12	20	30	19	15	100	1537
2012	0	2	12	20	29	20	18	100	1522
2013	0	2	13	17	30	20	19	100	1390
2014	0	3	13	17	29	17	20	100	1319
2015	0	3	15	15	29	21	19	100	1229
2016	0	3	17	16	29	19	17	100	1178
2017	0	2	13	19	28	18	19	100	1121
2018	0	3	13	18	31	17	18	100	1087
2019	0	3	10	18	31	20	18	100	1203
2020	0	2	10	19	30	19	19	100	1293

Monitoring sentence									
2012	0	0	7	20	27	13	33	100	15
2013	0	7	24	13	31	11	13	100	45
2014	0	2	19	33	26	12	7	100	42
2015	0	13	25	17	21	10	15	100	48
2016	0	2	29	25	15	21	8	100	48
2017	0	5	11	20	25	18	20	100	44
2018	0	8	16	24	16	16	19	100	37
2019	0	3	12	9	39	27	9	100	33
2020	0	4	19	15	19	27	15	100	26

*Includes supervised adults sentenced to conditional imprisonment (N=2)

Table 35. Community sanction clients according to gender (%) on 1 May in 2011–2020

	2011	2012	2013	2014	2015	2016	2017	2018	2019	2020
Supervision of persons sentenced to conditional imprisonment, young persons										
Men	916	995	826	671	716	737	652	649	664	609
Women	126	151	124	111	84	109	96	90	90	84
Total	1042	1146	950	782	800	846	748	739	754	693
Supervision of persons sentenced to conditional imprisonment, adults										
Men	-	-	-	-	-	-	-	-	-	2
Women	-	-	-	-	-	-	-	-	-	0
Total	-	-	-	-	-	-	-	-	-	2
Juvenile punishment										
Men	9	11	6	10	11	9	8	8	10	6
Women	3	0	0	0	0	0	0	1	1	1
Total	12	11	6	10	11	9	8	9	11	7
Community service										
Men	1362	1346	1210	1179	1081	1017	969	950	1063	1147
Women	175	176	180	140	148	161	152	137	140	146
Total	1537	1522	1390	1319	1229	1178	1121	1087	1203	1293
Supervision of parolees										
Men	1108	1009	953	982	961	1001	1007	1007	1011	1045
Women	102	87	82	87	106	93	88	99	100	102
Total	1210	1096	1035	1069	1067	1094	1095	1106	1111	1147
Monitoring sentence										
Men	-	15	43	40	42	45	36	33	28	23
Women	-	0	2	2	6	3	4	4	5	3
Total	-	15	45	42	48	48	40	37	33	26
Community sanctions in total										
Men	3395	3376	3038	2882	2811	2809	2672	2647	2776	2809
Women	406	414	388	340	344	366	340	331	336	359
Total	3801	3790	3426	3222	3155	3175	3012	2978	3112	3168
Women %	10,7	10,9	11,3	10,6	10,9	11,5	11,3	11,1	10,8	11,3

Table 36. Socio-economic background of offenders carrying out community service on 1 May in 2011–2020 (%)

	2011	2012	2013	2014	2015	2016	2017	2018	2019	2020
Income										
Student	5	5	5	6	6	7	8	6	6	7
Employed	27	29	28	26	23	26	27	31	31	29
Unemployed	57	54	56	56	58	57	56	54	53	54
In military service	0	0	0	0	0	0	0	0	0	0
Pensioner	10	11	10	11	11	9	8	8	9	10
Other	1	1	1	1	1	1	1	1	1	1
Total	100	100	100	100	100	100	100	100	100	100
N*	1401	1303	1256	1269	1117	1062	860	811	865	1036

Housing situation										
Permanent accommodation	86	85	87	89	89	86	85	86	86	86
Dormitory	1	1	1	1	1	1	0	1	1	1
Temporary accommodation	9	10	8	6	6	8	10	9	9	9
Institution	1	1	1	2	1	1	1	1	1	1
Homeless	3	4	4	3	3	4	4	3	4	4
Total	100	100	100	100	100	100	100	100	100	100
N*	1405	1312	1147	1274	1121	1069	866	816	866	1035

*Does not include clients who lack the survey data.

Table 37. Socio-economic background of supervised parolees on 1 May in 2011–2020 (%)

	2011	2012	2013	2014	2015	2016	2017	2018	2019	2020
Income										
Student	8	7	8	7	9	11	11	11	10	11
Employed	21	21	22	23	24	25	23	24	26	26
Unemployed	58	60	58	60	56	53	54	54	53	51
In military service	0	0	0	0	0	0	0	0	0	0
Pensioner	13	12	11	10	10	10	11	11	9	10
Other	0	0	1	1	0	1	1	1	1	1
Total	100	100	100	100	100	100	100	100	100	100
N*	1141	1011	953	988	983	1000	985	1012	991	1047

Housing situation										
Permanent accommodation	68	70	70	72	74	77	77	77	74	77
Dormitory	3	2	2	2	2	2	2	1	1	1
Temporary accommodation	19	17	16	14	15	11	10	11	14	12
Institution	2	1	2	2	1	2	2	2	2	1
Homeless	8	9	9	10	8	8	10	9	10	9
Total	100	100	100	100	100	100	100	100	100	100
N*	1156	1027	966	1021	1002	1006	1007	1016	992	1057

*Does not include clients who lack the survey data.

Table 38. Socio-economic background of supervised persons sentenced to conditional imprisonment on 1 May in 2011–2020 (%)

	2011	2012	2013	2014	2015	2016	2017	2018	2019	2020*
Income										
Student	24	25	24	26	28	28	27	23	25	24
Employed	15	15	13	13	12	12	12	13	15	13
Unemployed	54	54	55	56	54	49	53	58	54	58
In military service	1	1	1	0	1	1	0	0	1	0
Pensioner	2	1	1	2	2	4	1	1	1	1
Other	4	4	6	4	4	6	7	4	4	4
Total	100	100	100	100	100	100	100	100	100	100
N**	948	1008	894	725	661	729	646	583	549	535

Housing situation										
Permanent accommodation	81	80	80	80	82	79	78	76	77	81
Dormitory	1	1	1	1	1	1	1	1	1	0
Temporary accommodation	8	8	7	7	7	7	8	8	8	6
Institution	4	6	6	5	4	7	8	7	6	5
Homeless	6	5	6	6	6	6	5	8	8	7
Total	100	100	100	100	100	100	100	100	100	100
N**	959	1019	910	729	669	739	648	591	557	547

*Includes supervised adults sentenced to conditional imprisonment (N=2).

**Does not include clients who lack the survey data.

Table 39. Socio-economic background of clients serving juvenile punishment on 1 May in 2011–2020 (%)

	2011	2012	2013	2014	2015	2016	2017	2018	2019	2020
Income										
Student	33	18	17	30	30	0	43	38	44	17
Employed	17	0	0	0	0	11	0	0	0	17
Unemployed	33	36	83	50	50	56	43	38	22	50
In military service	0	0	0	0	0	0	0	0	0	0
Pensioner	0	0	0	0	0	0	0	0	0	17
Other	17	45	0	20	20	33	14	25	33	0
Total	100	100	100	100	100	100	100	100	100	100
N*	12	11	6	10	10	9	7	8	9	6

Housing situation										
Permanent accommodation	58	75	50	50	80	44	25	56	60	67
Dormitory	0	0	0	0	0	0	13	0	0	0
Temporary accommodation	8	0	17	10	10	11	0	0	0	17
Institution	33	25	17	30	10	22	38	33	30	0
Homeless	0	0	17	10	0	22	25	11	10	17
Total	100	100	100	100	100	100	100	100	100	100
N*	12	11	6	10	10	9	8	9	10	6

*Does not include clients who lack the survey data.

Table 40. Socio-economic background of offenders serving monitoring sentence on 1 May in 2012–2020 (%)

	2012	2013	2014	2015	2016	2017	2018	2019	2020
Income									
Student	20	5	12	15	13	2	5	15	15
Employed	33	44	26	23	27	27	35	39	31
Unemployed	20	42	36	42	50	52	49	33	38
In military service	0	0	0	0	0	0	0	0	0
Pensioner	20	9	14	10	6	9	3	6	15
Other	7	0	12	10	4	9	8	6	0
Total	100	100	100	100	100	100	100	100	100
N*	15	43	42	48	48	44	37	33	26

Housing situation									
Permanent accommodation	87	96	98	94	94	95	95	94	96
Dormitory	0	2	0	4	2	2	0	0	0
Temporary accommodation	7	0	0	0	2	2	5	3	4
Institution	7	2	2	2	2	0	0	3	0
Homeless	0	0	0	0	0	0	0	0	0
Total	100	100	100	100	100	100	100	100	100
N*	15	45	42	48	48	44	37	32	26

*Does not include clients who lack the survey data.

Table 41. Participation in programmes among community sanction clients whose sanction ended in 2016–2020

Supervision of parolees	2016	2017	2018	2019	2020
Anti-addiction	0	0	0	0	0
Traffic Safety Programme	0	1	1	0	2
MOVE!	1	3	1	1	1
Steering Wheel Programme	1	0	0	0	0
Anger Management (group)	1	3	2	2	2
Anger Management (individual)	4	5	4	3	2
New Direction	10	5	8	9	10
VINN (for women)	1	0	1	1	0
Behaviour-Interviewing-Change Programme	16	13	29	13	13
Substance Abuse Course	3	2	2	0	2
Total	37	32	48	29	32

Supervision of persons sentenced to conditional imprisonment	2016	2017	2018	2019	2020
Anti-addiction	0	1	0	1	0
Traffic Safety Programme	4	3	2	1	4
MOVE!	1	1	0	0	0
Steering Wheel Programme	0	0	0	0	0
Anger Management (group)	0	1	2	0	2
Anger Management (individual)	14	14	7	6	4
New Direction	4	4	2	2	4
VINN (for women)	0	1	1	0	0
Behaviour-Interviewing-Change Programme	19	38	51	37	31
Substance Abuse Course	0	0	0	1	2
Total	42	63	65	48	47

Table 42 continues on the next page.

Table 41. Participation in programmes among community sanction clients whose sanction ended in 2016–2020

Community service	2016	2017	2018	2019	2020
Anti-addiction	10	5	4	8	6
Traffic Safety Programme	62	55	56	50	58
MOVE!	4	4	4	3	5
Steering Wheel Programme	7	5	2	2	5
Anger Management (group)	7	7	12	6	3
Anger Management (individual)	20	24	7	11	5
New Direction	17	12	15	13	9
VINN (for women)	1	0	1	0	1
Behaviour-Interviewing-Change Programme	94	111	95	95	65
Substance Abuse Course	94	123	107	102	96
Total	316	346	303	290	253

Monitoring sentence	2016	2017	2018	2019	2020
Anti-addiction	0	1	0	0	0
Traffic Safety Programme	5	7	5	3	3
MOVE!	1	0	0	0	0
Steering Wheel Programme	0	2	1	0	0
Anger Management (group)	0	0	1	0	0
Anger Management (individual)	0	1	1	0	0
New Direction	0	0	0	0	0
VINN (for women)	0	0	0	0	0
Behaviour-Interviewing-Change Programme	5	5	4	1	3
Substance Abuse Course	1	0	0	0	0
Total	12	16	12	4	6

Table 42. Use of punitive measures in community sanctions in 2011–2020

Community service	2016	2017	2018	2019	2020	2016	2017	2018	2019	2020
Written caution	1047	968	944	795	594	591	567	553	640	542
Written warning	-	-	-	-	277	372	387	350	350	270
Interruption of enforcement	588	602	540	606	493	427	510	499	501	384
- of which prohibitions to start enforcement	135	144	137	132	118	128	163	156	164	123
- of which prohibitions to continue enforcement	16	23	7	9	16	7	9	5	3	7
Total	1635	1570	1484	1401	1364	1390	1464	1402	1491	1196

Monitoring sentence	2016	2017	2018	2019	2020	2016	2017	2018	2019	2020
Written caution	-	-	-	-	17	40	41	35	28	19
Written warning	-	33	46	55	32	41	38	21	23	26
Interruption of enforcement	-	44	77	69	59	75	57	49	59	50
- of which prohibitions to start enforcement	-	14	32	28	17	26	21	21	22	19
- of which prohibitions to continue enforcement	-	6	1	0	1	0	0	0	0	0
Total	-	77	123	124	108	156	136	105	110	95

Supervision of persons sentenced to conditional imprisonment**	2016	2017	2018	2019	2020	2016	2017	2018	2019	2020
Written caution	3	37	62	32	57	50	51	44	48	43
Written warning	-	8	18	8	18	29	23	23	18	13
Request to be fetched by the police	38	81	108	90	92	92	102	111	105	82
Notification to the prosecutor	-	3	11	10	7	5	9	12	10	6
Total	41	129	199	140	174	176	185	190	181	144

Juvenile punishment	2016	2017	2018	2019	2020	2016	2017	2018	2019	2020
Written caution	4	2	2	4	4	4	5	2	2	1
Written warning	2	2	0	0	3	4	2	1	1	0
Request to be fetched by the police	2	4	0	4	2	0	0	2	0	0
Interruption of enforcement	4	4	4	3	4	2	1	6	0	0
- of which prohibitions to start enforcement	0	0	0	0	0	2	0	1	0	0
- of which prohibitions to continue enforcement	0	0	0	0	0	0	0	0	0	0
Total	12	12	6	11	13	10	8	11	3	1

Supervision of parolees	2016	2017	2018	2019	2020	2016	2017	2018	2019	2020
Written caution	-	-	-	-	26	65	57	59	76	37
Written warning	83	48	60	51	54	89	76	81	88	57
Request to be fetched by the police	70	51	69	64	66	92	105	104	125	83
Notification to the prosecutor	13	6	10	16	6	7	9	14	16	8
Total	166	105	139	131	152	253	247	258	305	185

*The figure for 2019 has been corrected.

**Includes the punitive measures imposed on supervised adults sentenced to conditional imprisonment (N=7)



Criminal Sanctions Agency

Central Administration

Lintulahdenkatu 5, FI-00530 Helsinki,
Finland

Tel. +358 2956 88500

kirjaamo.rise@om.fi

www.rikosseuraamus.fi/en

ISSN 2736-8432 (Online publication)